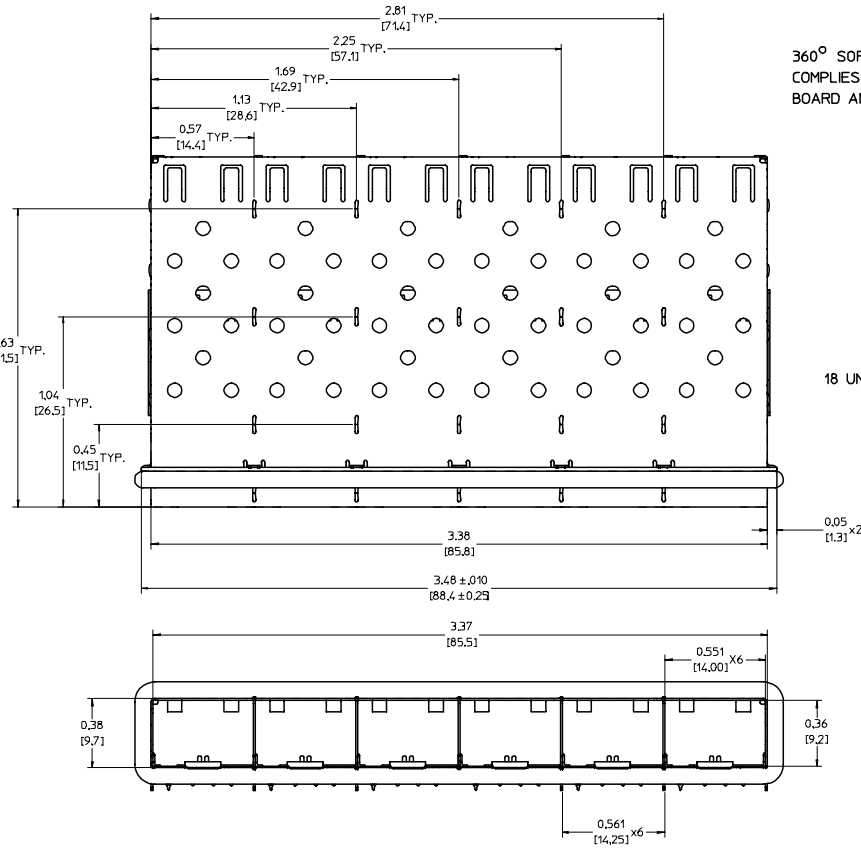


20 19 18 17 16 15 14 13 12 11 74747 9 8 7 6 5 4 3 2 1

L
K
J
I
H
G
F
E
D
C
B
A

L
K
J
I
H
G
F
E
D
C
B
A



360° SOFT EMI BEZEL GASKET
 COMPLIES WITH (SFP) MSA
 BOARD AND BEZEL LOCATIONS

18 UNDER BELLY EMI PINS

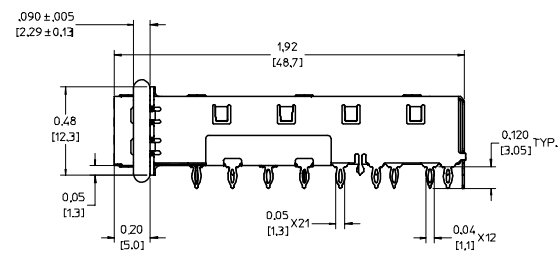
EMI FINGERS
 CONTACT ADAPTER

INNER WALL TABS ARE COINED
 OVER BASE AND COVER FOR RIGIDITY

TABS USED TO ATTACH
 LIGHT PIPE COVER

GASKET SEAM LOCATED
 ON SIDE OF CAGE

DIMENSIONS OF EACH INNER CAGE DESIGNED
 TO FUNCTION WITH SMALL FORM-FACTOR
 PLUGGABLE (SFP) TRANSCEIVER



NOTES:

- PRESS FIT LEGS 0.120" LONG-
 0.062 [1.57] MINIMUM PCB THICKNESS FOR SINGLE SIDED USE.
 0.118 [3.00] MINIMUM PCB THICKNESS FOR BELLY TO BELLY USE.
 INSERTION FORCE INTO PCB: <100 LBS.
- MATERIAL: COPPER ALLOY
 PLATING: PRE-PLATED NICKEL
- REFERENCE DOCUMENTS:
 PRODUCT SPECIFICATION: PS-74728-000
 COSMETIC SPECIFICATIONS: WI-HP-7-2774 AND WI-HPA-7-0093
- MATES WITH SERIES 74748, LIGHT PIPE COVER ASSEMBLY.
- THIS PART MEETS THE RESTRICTION OF HAZARDOUS SUBSTANCES IN
 ELECTRICAL AND ELECTRONIC EQUIPMENT (ROHS) DIRECTIVE (2002/95/EC).

EC NO: USY2007-0153 DRW: CCOX 2006/11/22 CHKD: 2006/12/13 APPR: RMAHMOOD2006/12/19 REV DESCRIPTION	QUALITY SYMBOLS	GENERAL TOLERANCES (UNLESS SPECIFIED)	SCALE 3:1	DESIGN UNITS INCH	THIRD ANGLE PROJECTION	REVISE ON CAD ONLY
	4 PLACES ± --- ± --- 3 PLACES ± --- ± .005 2 PLACES ± 0.13 ± .007 1 PLACE ± 0.18 ± --- ANGULAR ± 1°	DIMENSION STYLE IN/MM DRAWN BY DATE K SIMONSO 2004/07/08 CHECKED BY DATE BRUSSELL 2004/07/08 APPROVED BY DATE BRUSSELL 2004/07/08	TITLE 1X6 SFP GANGED CAGE ASSEMBLY, W/.090 OD GASKET MOLEX INCORPORATED			
	DRAFT WHERE APPLICABLE MUST REMAIN WITHIN DIMENSIONS	MATERIAL NO. 747470001 DOCUMENT NO. SD-74747-001 SHEET NO. 1 OF 5				
	THIS DRAWING CONTAINS INFORMATION THAT IS PROPRIETARY TO MOLEX INCORPORATED AND SHOULD NOT BE USED WITHOUT WRITTEN PERMISSION					

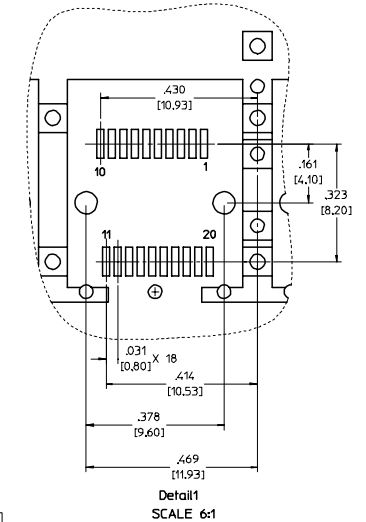
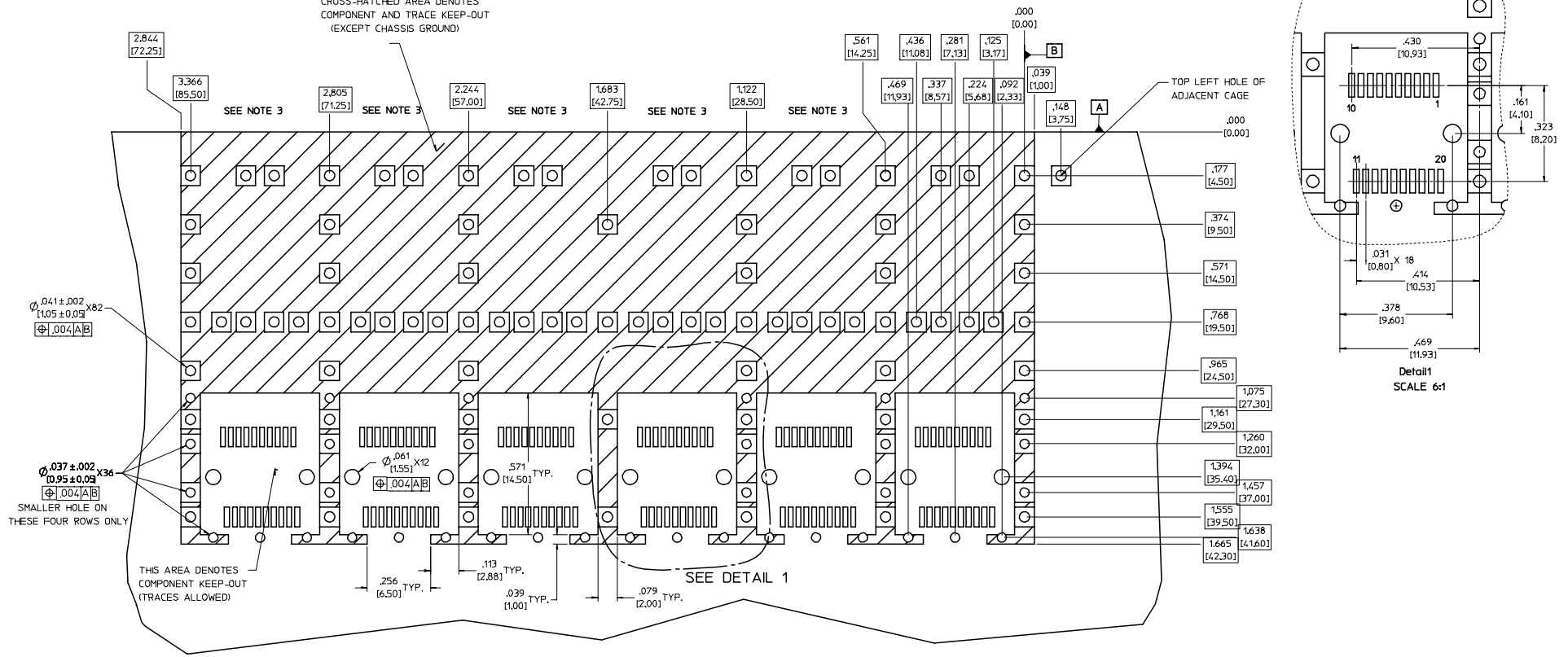
19 18 17 16 15 14 13 12 11 10 9 8 7 6 5 4 3 2 1

20 19 18 17 16 15 14 13 12 11 10 9 8 7 6 5 4 3 2 1

PCB LAYOUT FOR BELLY TO BELLY MOUNTING

HOST CONNECTOR DETAIL

CROSS-HATCHED AREA DENOTES
COMPONENT AND TRACE KEEP-OUT
(EXCEPT CHASSIS GROUND)



Ø.041±.002
[1.05 ± 0.09]
Φ.004[A/B]

Ø.037±.002
[0.95 ± 0.09]
Φ.004[A/B]
SMALLER HOLE ON
THESE FOUR ROWS ONLY

THIS AREA DENOTES
COMPONENT KEEP-OUT
(TRACES ALLOWED)

NOTES:

1. PADS AND VIAS GO TO CHASSIS GROUND, (94 PLACES).
RECOMMENDED PADS TO BE 2mm SQUARE.
2. PLATING OPTIONAL FOR THROUGH HOLES, (24 PLACES).
3. HOLE PATTERN REPEATS FOR EACH PORT.
SPACING BETWEEN PORTS IS 14.25mm.

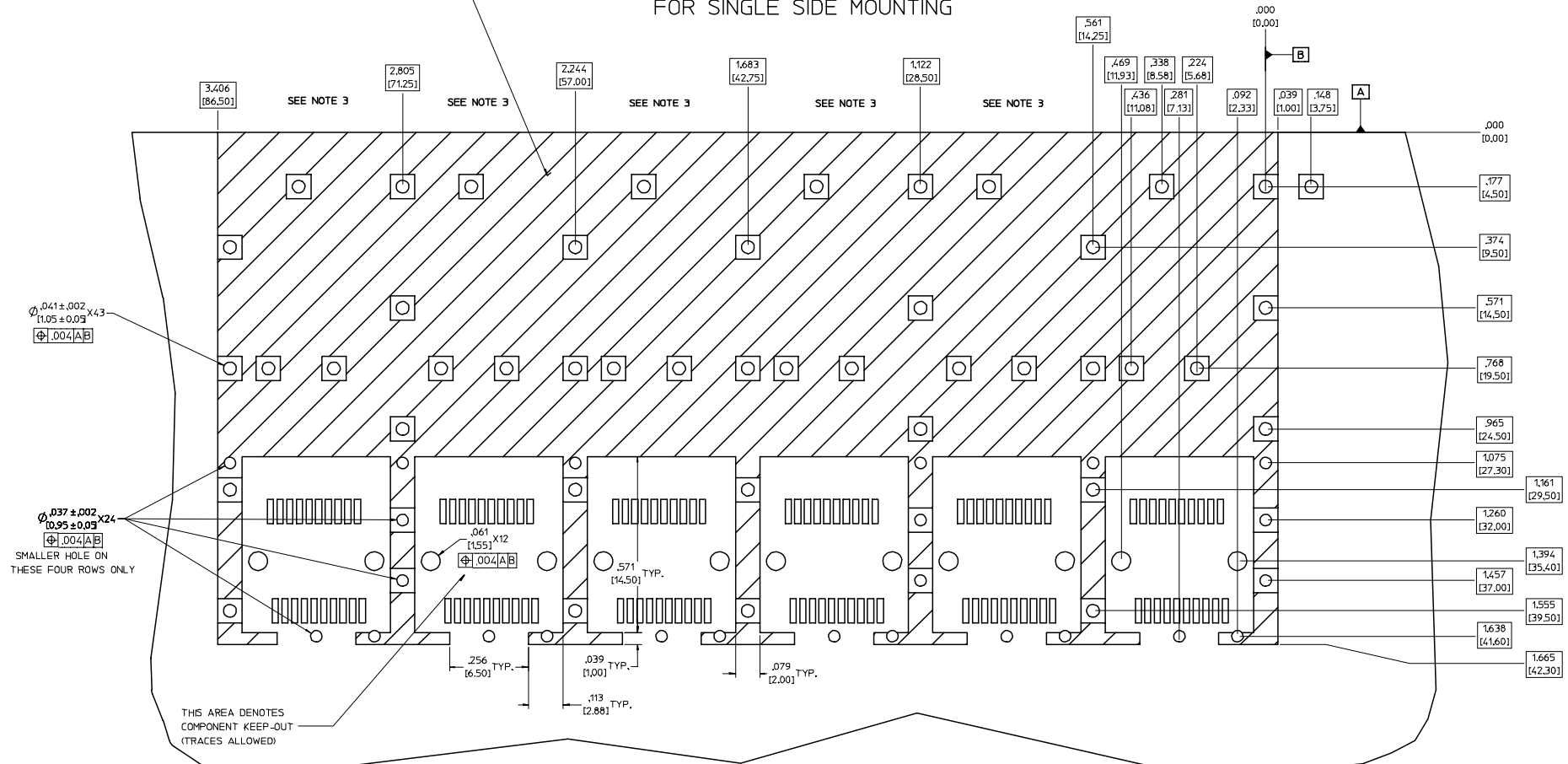
EC NO: USY2007-0153 DRWN:CCOX 2006/11/22 CHKD: 2006/12/13 APPR:RMAHMOOD2006/12/19 REV DESCRIPTION	QUALITY SYMBOLS	GENERAL TOLERANCES (UNLESS SPECIFIED)	SCALE 5:1	DESIGN UNITS INCH	THIRD ANGLE PROJECTION	REVISE ON CAD ONLY
	▽.0	4 PLACES ± --- ± --- 3 PLACES ± --- ± .005	mm INCH	DIMENSION STYLE IN/MM	TITLE 1X6 SFP GANGED CAGE ASSEMBLY, W/.090 OD GASKET	
	▽.0	2 PLACES ± 0.13 ± .007 1 PLACE ± 0.18 ± ---	ANGULAR ± 1°	DRAWN BY DATE KSIMONSO 2004/07/08	MATERIAL NO. 747470001 DOCUMENT NO. SD-74747-001 SHEET NO. 2 OF 5	
		DRAFT WHERE APPLICABLE MUST REMAIN WITHIN DIMENSIONS	APPROVED BY DATE BRUSSELL 2004/07/08	MOLEX INCORPORATED THIS DRAWING CONTAINS INFORMATION THAT IS PROPRIETARY TO MOLEX INCORPORATED AND SHOULD NOT BE USED WITHOUT WRITTEN PERMISSION		

19 18 17 16 15 14 13 12 11 10 9 8 7 6 5 4 3 2 1

20 19 18 17 16 15 14 13 12 11 10 9 8 7 6 5 4 3 2 1

PCB LAYOUT FOR SINGLE SIDE MOUNTING

CROSS-HATCHED AREA DENOTES
COMPONENT AND TRACE KEEP-OUT
(EXCEPT CHASSIS GROUND)

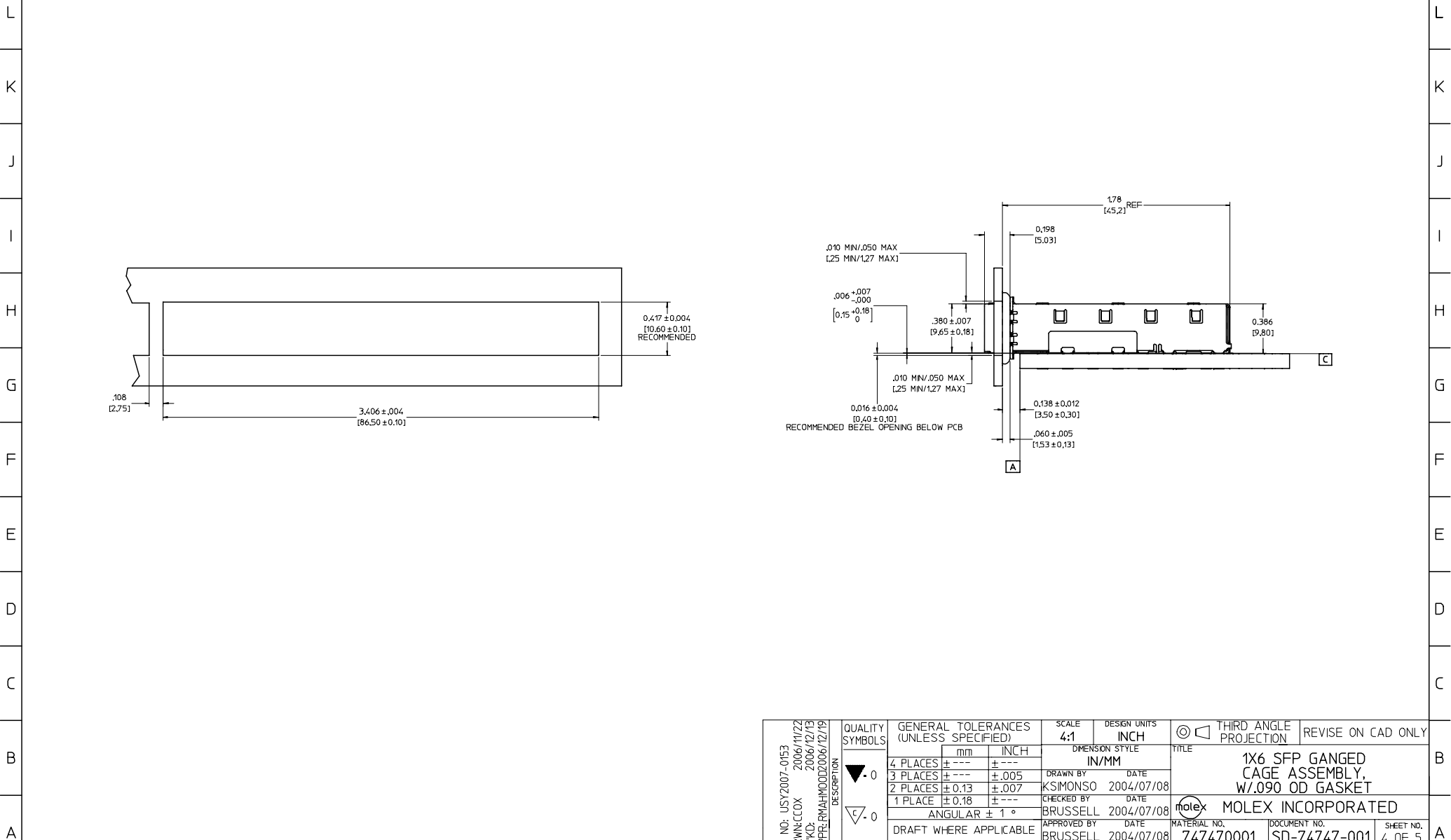


- NOTES:
- PADS AND VIAS GO TO CHASSIS GROUND. (48 PLACES).
RECOMMENDED PADS TO BE 2mm SQUARE.
 - PLATING OPTIONAL FOR THROUGH HOLES. (18 PLACES).
 - HOLE PATTERN REPEATS FOR EACH PORT.
SPACING BETWEEN PORTS IS 14.25mm.

EC NO: USY2007-0153 DRW:CCOX 2006/11/22 CHKD: 2006/12/13 APPR:RMAHMOOD2006/12/19 REV DESCRIPTION	QUALITY SYMBOLS	GENERAL TOLERANCES (UNLESS SPECIFIED)	SCALE 6:1	DESIGN UNITS INCH	THIRD ANGLE PROJECTION	REVISE ON CAD ONLY
	4 PLACES ± --- ± --- 3 PLACES ± --- ± .005 2 PLACES ± 0.13 ± .007 1 PLACE ± 0.18 ± ---	DIMENSION STYLE IN/MM DRAWN BY DATE KSIMONSO 2004/07/08 CHECKED BY DATE BRUSSELL 2004/07/08 APPROVED BY DATE BRUSSELL 2004/07/08	ANGULAR ± 1° DRAFT WHERE APPLICABLE MUST REMAIN WITHIN DIMENSIONS	MATERIAL NO. 747470001 DOCUMENT NO. SD-74747-001 SHEET NO. 3 OF 5	TITLE 1X6 SFP GANGED CAGE ASSEMBLY, W/.090 OD GASKET MOLEX INCORPORATED	
	THIS DRAWING CONTAINS INFORMATION THAT IS PROPRIETARY TO MOLEX INCORPORATED AND SHOULD NOT BE USED WITHOUT WRITTEN PERMISSION					
	THIS DRAWING CONTAINS INFORMATION THAT IS PROPRIETARY TO MOLEX INCORPORATED AND SHOULD NOT BE USED WITHOUT WRITTEN PERMISSION					

19 18 17 16 15 14 13 12 11 10 9 8 7 6 5 4 3 2 1

20 19 18 17 16 15 14 13 12 11 74747 9 8 7 6 5 4 3 2 1



EC NO: USY2007-0153 DRWN:CCOX 2006/11/22 CHKD: 2006/12/13 APPR:RMAHMOOD2006/12/19 REV:	QUALITY SYMBOLS	GENERAL TOLERANCES (UNLESS SPECIFIED)	SCALE 4:1	DESIGN UNITS INCH	THIRD ANGLE PROJECTION	REVISE ON CAD ONLY
	0.0 0.1	4 PLACES ± --- ± --- 3 PLACES ± --- ± .005 2 PLACES ± 0.13 ± .007 1 PLACE ± 0.18 ± ---	DIMENSION STYLE IN/MM DRAWN BY DATE KSIMONSO 2004/07/08 CHECKED BY DATE BRUSSELL 2004/07/08 APPROVED BY DATE BRUSSELL 2004/07/08	TITLE 1X6 SFP GANGED CAGE ASSEMBLY, W/.090 OD GASKET MOLEX INCORPORATED		
		ANGULAR ± 1 °	MATERIAL NO. 747470001 DOCUMENT NO. SD-74747-001 SHEET NO. 4 OF 5			
		DRAFT WHERE APPLICABLE MUST REMAIN WITHIN DIMENSIONS	THIS DRAWING CONTAINS INFORMATION THAT IS PROPRIETARY TO MOLEX INCORPORATED AND SHOULD NOT BE USED WITHOUT WRITTEN PERMISSION			

19 18 17 16 15 14 13 12 11 10 9 8 7 6 5 4 3 2 1

20 | 19 | 18 | 17 | 16 | 15 | 14 | 13 | 12 | 11 | 74747 | 9 | 8 | 7 | 6 | 5 | 4 | 3 | 2 | 1

DATE	REV	CHANGES	COMMENTS
3/1/2004	1	PRELIMINARY	N/A
07/08/2004	A	INITIAL RELEASE	CHANGED GASKET TO 0.090 DIA AND CHANGED LOCATION.
01/19/2006	B	ADDED PCB AND BEZEL LAYOUT. ADDED NOTE FOR GASKET SEAM PLACEMENT.	N/A
10/11/2006	C	UPDATED NOTE #2, DELETED NOTE REGARDING PLATING.	N/A

EC NO: USY2007-0153 DRWN:CCOX 2006/11/22 CHKD: 2006/12/13 APPR:RMAHMOOD2006/12/19 REV:	QUALITY SYMBOLS	GENERAL TOLERANCES (UNLESS SPECIFIED)	SCALE 1:1	DESIGN UNITS INCH	THIRD ANGLE PROJECTION	REVISE ON CAD ONLY															
	▼ .0 ∇ .0	<table border="1"> <thead> <tr> <th></th> <th>mm</th> <th>INCH</th> </tr> </thead> <tbody> <tr> <td>4 PLACES</td> <td>± .001</td> <td>± .0005</td> </tr> <tr> <td>3 PLACES</td> <td>± .002</td> <td>± .001</td> </tr> <tr> <td>2 PLACES</td> <td>± 0.13</td> <td>± .007</td> </tr> <tr> <td>1 PLACE</td> <td>± 0.18</td> <td>± .010</td> </tr> </tbody> </table>		mm	INCH	4 PLACES	± .001	± .0005	3 PLACES	± .002	± .001	2 PLACES	± 0.13	± .007	1 PLACE	± 0.18	± .010	DIMENSION STYLE IN/MM DRAWN BY DATE KSIMONSO 2004/07/08 CHECKED BY DATE BRUSSELL 2004/07/08 APPROVED BY DATE BRUSSELL 2004/07/08	TITLE 1X6 SFP GANGED CAGE ASSEMBLY, W/090 OD GASKET MOLEX INCORPORATED MATERIAL NO. 747470001 DOCUMENT NO. SD-74747-001 SHEET NO. 5 OF 5		
			mm	INCH																	
		4 PLACES	± .001	± .0005																	
3 PLACES	± .002	± .001																			
2 PLACES	± 0.13	± .007																			
1 PLACE	± 0.18	± .010																			
DRAFT WHERE APPLICABLE MUST REMAIN WITHIN DIMENSIONS		THIS DRAWING CONTAINS INFORMATION THAT IS PROPRIETARY TO MOLEX INCORPORATED AND SHOULD NOT BE USED WITHOUT WRITTEN PERMISSION																			

19 | 18 | 17 | 16 | 15 | 14 | 13 | 12 | 11 | 10 | 9 | 8 | 7 | 6 | 5 | 4 | 3 | 2 | 1